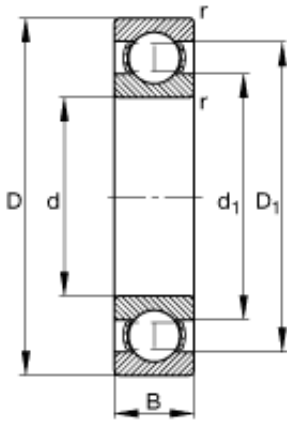




Bearing company



40 mm x 90 mm x 23 mm fag 6308 bearing

Bearing No. 6308

| | |
|--------------------|--|
| Size | 40x90x23 mm |
| Bore Diameter | 40 mm |
| Outer Diameter | 90 mm |
| Width | 23 mm |
| d | 40 mm |
| D | 90 mm |
| B | 23 mm |
| D ₁ | 74,6 mm |
| D _{a max} | 81 mm |
| d ₁ | 55,6 mm |
| d _{a min} | 49 mm |
| r _{a max} | 1,5 mm |
| r _{min} | 1,5 mm |
| m | 0,64 kg / Weight |
| C _r | 45500 N / Dynamic load rating (radial) |
| C _{0r} | 25000 N / Static load rating (radial) |
| n _G | 10800 1/min / Limiting speed |
| n _B | 9000 1/min / Reference speed |
| C _{ur} | 1270 N / Fatigue limit load, radial |

6308 Bearing 2D drawings and 3D CAD models