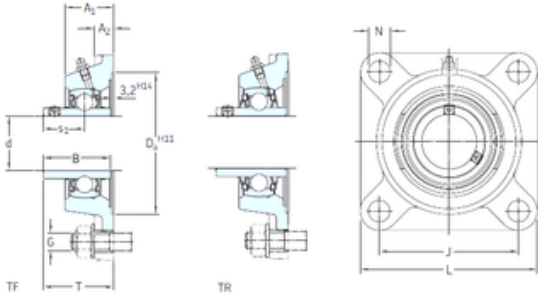




## Bearing company

### skf fy 40 tf bearing

Bearing No. fy 40 tf



fy 40 tf Bearing 2D drawings and 3D CAD models

|                               |                            |
|-------------------------------|----------------------------|
| Bore Diameter                 | 40 mm                      |
| d                             | 40 mm                      |
| Da                            | 115,9 mm                   |
| s1                            | 30,2 mm                    |
| A1                            | 38,5 mm                    |
| B                             | 49,2 mm                    |
| G                             | 12 mm                      |
| J                             | 101,5 mm                   |
| L                             | 130 mm                     |
| N                             | 14 mm                      |
| T                             | 54,2 mm                    |
| A2                            | 14 mm                      |
| Weight                        | 1,9 Kg                     |
| Basic dynamic load rating (C) | 30,7 kN                    |
| Basic static load rating (C0) | 19 kN                      |
| Fatigue load limit (Pu)       | 0,8                        |
| Category                      | Flange Block Bearings      |
| Inventory                     | 0.0                        |
| Manufacturer Name             | SKF                        |
| Minimum Buy Quantity          | N/A                        |
| Weight / Kilogram             | 1.902                      |
| EAN                           | 7316577035936              |
| Product Group                 | M06110                     |
| Number of Mounting Holes      | 4                          |
| Mounting Method               | Set Screw                  |
| Housing Style                 | 4 Bolt Square Flange Block |



## Bearing company

|                                    |  |
|------------------------------------|--|
| Rolling Element                    | Ball Bearing   |
| Housing Material                   | Cast Iron  |
| Expansion / Non-expansion          | Non-expansion  |
| Mounting Bolts                     | 12 Millimeter  |
| Relubricatable                     | Yes  |
| Insert Part Number                 | YAR 208-2F   |
| Seals                              | M Seal   |
| Housing Configuration              | 1 Piece Solid  |
| Pilot Configuration                | No Pilot   |
| Inch - Metric                      | Metric   |
| Long Description                   | 4 Bolt Square Flange Block; 40MM Bore; 144MM Bolt Circle; 101.5MM Bolt Spacing; 1 Piece Solid; Set Screw Mount; Cast Iron; Ball Bearing; 49.2MM Length Thru Bore; Relubricatable; M Seal Seals |
| Other Features                     | Single Row   Standard Duty   Wide Inner Race   Open End   Has Flinger   Y Bearing  |
| Category                           | Flange Block   |
| UNSPSC                             | 31171501   |
| Harmonized Tariff Code             | 8483.20.40.40  |
| Noun                               | Bearing  |
| Keyword String                     | Flanged  |
| Manufacturer URL                   | <a href="http://www.skf.com">http://www.skf.com</a>  |
| Manufacturer Item Number           | FY 40 TF   |
| Weight / LBS                       | 4.19   |
| Nominal Bolt Circle Diameter Round | 5.7 Inch   144 Millimeter  |
| Bolt Spacing                       | 3.996 Inch   101.5 Millimeter  |
| Cartridge Pilot Diameter           | 0 Inch   0 Millimeter  |
| Cartridge Pilot Depth              | 0 Inch   0 Millimeter  |



## Bearing company

|                               |                               |
|-------------------------------|-------------------------------|
| Bore                          | 1.575 Inch   40 Millimeter    |
| Length Thru Bore              | 1.937 Inch   49.2 Millimeter  |
| bore diameter:                | 40 mm                         |
| radial static load capacity:  | 19 kN                         |
| bolt center-to-center length: | 101.5 mm                      |
| seal type:                    | Contact with Flinger          |
| overall length/diameter:      | 130 mm                        |
| length through bore:          | 54.2 mm                       |
| bore type:                    | Round                         |
| operating temperature range:  | Maximum of +110 ° F           |
| duty type:                    | Standard Duty                 |
| finish/coating:               | Uncoated                      |
| mounting type:                | Four-Bolt Flange              |
| maximum rpm:                  | 4800 RPM                      |
| housing material:             | Cast Iron                     |
| lubrication type:             | Lubrication Fitting           |
| locking device:               | Set Screw                     |
| series:                       | FY                            |
| expansion type:               | Non-Expansion Bearing (Fixed) |
| replacement bearing:          | YAR 208-2F                    |
| radial dynamic load capacity: | 30.7 kN                       |
| manufacturer upc number:      | 7316577035936                 |
| Housing material              | Cast iron                     |
| D <sub>a</sub>                | 115.9 mm                      |
| D <sub>b1</sub>               | 98 mm                         |
| D <sub>b2</sub>               | 106 mm                        |
| A                             | 38.5 mm                       |
| A <sub>1</sub>                | 14 mm                         |
| A <sub>3</sub>                | 3.2 mm                        |
| A <sub>5</sub>                | 23.5 mm                       |
|                               |                               |



## Bearing company

|   |               |
|---|---------------|
| $s_1$   | 30.2 mm       |
| $R_G$   | 1/4-28 UNF    |
| $R_1$   | 25.5 mm       |
| $D_N$   | 6.5 mm        |
| $SW_N$  | 7 mm          |
| $G_N$   | 1/4-28 SAE-LT |
| $J_6$   | 118 mm        |
| $J_7$   | 34 mm         |
| $N_4$   | 4 mm          |
| Basic dynamic load rating C                       | 30.7 kN       |
| Basic static load rating $C_0$                    | 19 kN         |
| Fatigue load limit $P_u$                          | 0.8 kN        |
| Limiting speed                                    | 4800 r/min    |
| Mass bearing unit                                 | 1.75 kg       |
| Thread grub screw $G_2$                           | M8x1          |
| Hexagonal key size for grub screw N               | 4 mm          |
| Recommended tightening torque for grub screw      | 6.5 N · m     |
| Recommended diameter for attachment bolts, mm G   | 12 mm         |
| Recommended diameter for attachment bolts, inch G | 0.5 in        |
| Housing   | FY 508 M      |
| Bearing   | YAR 208-2F    |
| End cover   | ECY 208       |